

GENERAL INFORMATION

# BLACKBURN SOUTH CLINIC

# SPECIALIST EYE CARE FOR PATIENTS

**For over 40 years, Vision Eye Institute Blackburn South has provided comprehensive eye care to the local community. In addition to treating general eye conditions, our highly experienced team of ophthalmologists specialise in glaucoma, retinal conditions, cataracts, corneal conditions, laser eye surgery and reconstructive surgery (oculoplastics).**

Equipped with all of the modern facilities expected from a world-class ophthalmic centre, our clinic offers patients the latest treatments and innovations in eye care. We accept all emergency cases, as well as DVA, TAC and Workcover patients.

Surgery is performed at either Vision Day Surgery Camberwell or Panch Day Surgery Centre. Laser eye surgery is performed at Vision Eye Institute Melbourne, our dedicated laser clinic on St Kilda Road.

## High-quality care

Vision Eye Institute is committed to delivering personalised, safe, high-quality care. To minimise patient risk, and to monitor and improve the quality of our services, we have established robust quality management systems. We place great value on patient feedback. Please let our reception staff know if you wish to provide feedback about our service – we welcome and appreciate your input.



# FULL-SERVICE CLINIC

Our highly experienced and friendly clinic team deliver a comprehensive range of ophthalmic services. In addition to general eye checks, patients can access testing and treatment for complex eye conditions, with many procedures performed on-site in the consulting and treatment rooms.

## CATARACT & LENS SURGERY



Cataract treatment involves keyhole surgery to remove the cloudy lens, which is replaced with an artificial intraocular lens. Cataract surgery is the most common eye surgery performed in the world and has a high success rate. Our surgeons perform laser cataract surgery and, in some cases, can help patients get rid of their reading glasses by using the latest lens options.

Cataract surgery is performed in one of our affiliated day surgeries.

## GLAUCOMA



While glaucoma cannot be cured, treatments can generally control or slow disease progression. Increased pressure inside the eye causes damage to the optic nerve and leads to irreversible vision loss. Treatment involves lowering eye pressure by improving fluid drainage.

Most patients can manage their glaucoma with medicated eye drops, but sometimes another type of treatment is necessary. Your doctor may recommend laser treatment, filtration surgery or minimally invasive glaucoma surgery (e.g. iStent) to improve fluid drainage from the eye.

## DIABETIC EYE DISEASE



Patients with type 1 diabetes and many of those with type 2 diabetes will usually develop eye complications within 20 years, such as cataracts, glaucoma or diabetic retinopathy. Our doctors have expertise in diagnosing and treating eye conditions in patients with diabetes.

## RETINAL CONDITIONS



We see all patients with conditions that affect the retina (the light-sensitive tissue at the back of the eye) and macula (the part of the retina responsible for central vision). These include age-related macular degeneration, epiretinal membrane, macular hole, floaters, retinal detachment and diabetic retinopathy. Many of these conditions can be sight threatening and require urgent treatment.

## CORNEAL CONDITIONS



We treat corneal disorders such as pterygium (Surfer's Eye), keratoconus, corneal ulcers, recurrent corneal erosion and corneal dystrophies. Our corneal specialists are experts in pterygium removal, corneal transplantation, corneal ring implants and collagen cross-linking.

## GENERAL EYE HEALTH



Patients can also have a comprehensive eye check at our clinic and treatment for more general eye conditions.

## RECONSTRUCTIVE EYE SURGERY



Some patients require surgical treatment of the eyelids, tear (lacrimal) ducts and/or the eye socket (e.g. for eyelid tumours, eyelids that do not align properly, drooping eyelids and blocked tear ducts). This type of reconstructive surgery is also referred to as oculoplastics and is performed in our day surgery.

## NERVE-RELATED VISION PROBLEMS



Our neuro-ophthalmologists conduct comprehensive examinations to diagnose nerve-related vision problems and provide a range of treatment options, including medication and surgery, depending on the condition.

## LASER EYE SURGERY



Laser eye surgery involves using a cool-temperature laser to reshape the cornea and correct vision. Our team of refractive surgeons perform LASIK and ASLA/PRK (including transepithelial PRK) and will advise which option is best suited to your situation. This will depend on whether you have short-sightedness, long-sightedness or astigmatism, and the thickness and health of your cornea.

Laser eye surgery is performed in the laser suite at Vision Eye Institute Melbourne on St Kilda Road. However, we offer pre- and post-operative consultations with our laser eye surgeons, or with Clinical Optometrist, Michelle Shih, at Blackburn. We also offer free, no-obligation assessments to check whether you are eligible for laser eye surgery, with Michelle Shih. Consultations with Michelle are available in English or Mandarin.

[All medical and surgical procedures have potential complications. Check with your ophthalmologist before proceeding.](#)

---

# HIGHLY EXPERIENCED SPECIALISTS

## Doctor partners



### Dr Alex Ioannidis

Cataract and Anterior Segment Surgery

Dr Alex Ioannidis is an experienced cataract and anterior segment surgeon. He treats complex cataract cases such as those seen in patients with coexisting eye diseases, including glaucoma and macular degeneration.



### Dr Lewis Levitz

Cataract Surgery, Oculoplastics,  
General Ophthalmology

Dr Lewis Levitz specialises in cataract surgery, reconstructive eye surgery and general ophthalmology.



### Dr Raj P Pathmaraj

Cataract Surgery, General Ophthalmology

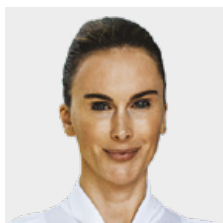
Dr Raj Pathmaraj specialises in cataract surgery, glaucoma and other optic nerve diseases. He also treats ocular surface diseases and more general eye conditions.



### Dr Ron Stasiuk

General Ophthalmology

Dr Ron Stasiuk treats general eye conditions and specialises in post-surgical laser treatment for cataracts and glaucoma.



### **A/Prof Abi Tenen**

Refractive Surgery, Keratoconus, Pterygium

A/Prof Abi Tenen specialises in cataract and refractive (vision correction) surgery, including laser eye surgery. She also treats corneal conditions, including keratoconus and pterygium.



### **Prof Rasik Vajpayee**

Cornea, Cataract Surgery, Refractive Surgery

Prof Rasik Vajpayee specialises in corneal conditions, including keratoconus, pterygium and corneal transplantations. He is also a cataract and refractive (vision correction) surgeon.



### **Dr Christolyn Raj**

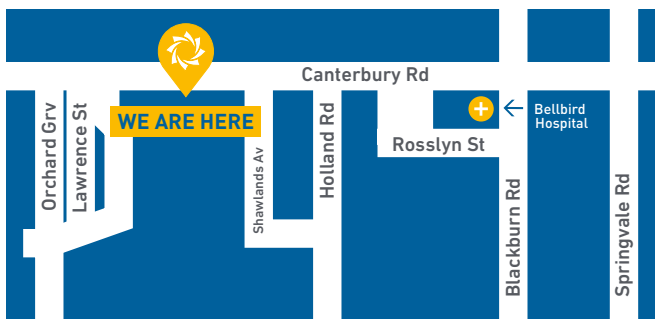
Medical Retina, Cataract Surgery,  
General Ophthalmology

Dr Christolyn Raj specialises in cataracts, laser-assisted cataract surgery and retinal diseases, including age-related maculopathy, diabetes and retinal vein occlusion.

# CONVENIENTLY LOCATED

Our clinic is conveniently located in the eastern suburbs of Melbourne, near the Forest Hill Chase shopping centre. Parking is available at the rear of the building, off Shawlands Avenue. To reach the clinic via public transport, take bus route 703 or 765 to the Canterbury Road/Holland Road stop – our clinic is only a short walk away.

The clinic has ramp access for people with limited mobility.



## VISION EYE INSTITUTE BLACKBURN SOUTH

156 Canterbury Rd, Blackburn South, VIC 3130

**T:** (03) 9877 6288

**F:** (03) 9894 2691

**E:** [blackburn@visioneyeinstitute.com.au](mailto:blackburn@visioneyeinstitute.com.au)



SCAN THIS QR CODE  
TO VIEW OUR SERVICES  
BROCHURES



[visioneyeinstitute.com.au](http://visioneyeinstitute.com.au)



Transforming lives. That's our vision.