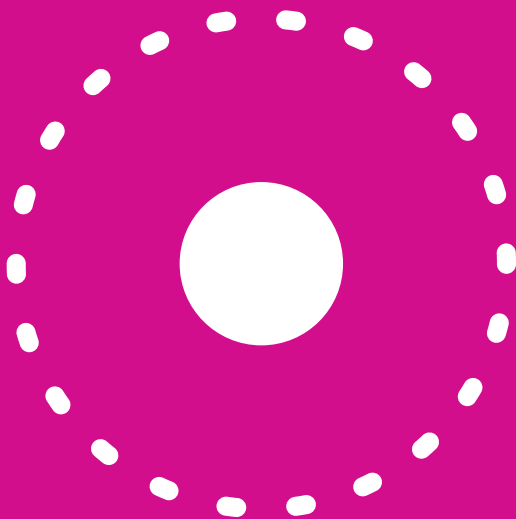


GENERAL INFORMATION

# CORNEAL CONDITIONS



vision  
eye institute

---

# WHAT ARE CORNEAL CONDITIONS?

The cornea is the clear outer layer of the eye. Shaped like a dome, it helps to protect the eye from foreign bodies and also plays an important role in vision by refracting (bending) light entering the eye to help focus it on the light-sensitive tissue at the back of the eye (retina).

A range of diseases and disorders can affect the cornea. Even seemingly minor eye irritations have the potential to lead to scarring and ulcers, so it's important to seek prompt medical advice.

**1** CORNEA

**2** IRIS

**3** LENS

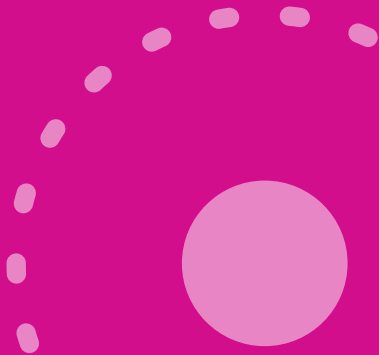
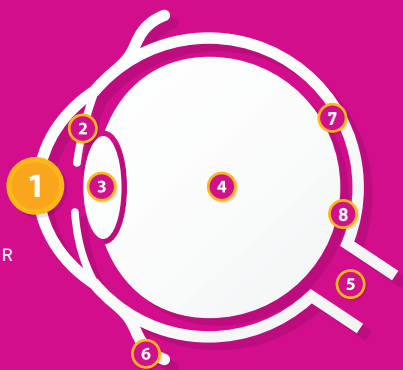
**4** VITREOUS HUMOUR

**5** OPTIC NERVE

**6** MUSCLE

**7** RETINA

**8** MACULA



---

# WHAT ARE THE SYMPTOMS OF A CORNEAL CONDITION?



**Depending on the specific corneal condition involved, symptoms may include:**

- Sensation of having a foreign body in the eye
- Pain
- Watering of the eye
- Redness
- Blurred vision.

---

**CORNEAL SCARS RESULTING FROM DISEASE, INFECTION OR INJURY CAN AFFECT YOUR VISION.**

---

# WHAT ARE THE MAIN CORNEAL CONDITIONS

## CORNEAL ABRASION

This is a scratch caused by physical trauma to the cornea, including the presence of a foreign body.

If this happens to you, don't rub your eye or touch your cornea. If a foreign object is embedded in your cornea, do not attempt to remove it. Seek immediate medical care to avoid potentially serious complications, such as an infection, a corneal ulcer or corneal erosion.

Tarsorrhaphy is a surgical procedure that is sometimes performed on patients with corneal exposure or abrasions. The eyelids are partially sewn together to narrow the opening and protect the cornea until healing is complete.

## RECURRENT CORNEAL EROSION

Recurrent corneal erosion is a disorder that occurs when the top layer of the cornea fails to adhere to the tissue (Bowman's layer) directly underneath it. It can be caused by trauma, disease or diabetes and affects vision.

Treatment may include topical lubricants, antibiotic drops, 'bandage' contact lens, alcohol delamination or phototherapeutic keratectomy (PTK).

## CORNEAL ULCER

A corneal ulcer is an open wound on the cornea due to a bacterial infection or, less commonly, a viral or fungal infection. Early treatment is essential to avoid loss of vision.

Treatment usually starts with topical antibiotics (eye drops or ointment). If the ulceration is in the centre of your eye, it may take longer to recover. An anti-fungal agent may be necessary if the ulcer was caused by a tree branch or dirt.

Corneal transplantation is reserved for severe cases that have failed to respond to other treatments.



## CORNEAL DYSTROPHY

Corneal dystrophy refers to a group of genetic eye disorders, in which part(s) of the cornea lose clarity because of a build-up of fat or cholesterol deposits.

The disorder usually occurs before the age of 30 and affects men and women equally. You need to see an ophthalmologist for an accurate diagnosis.

Mild symptoms may be treated with lubricating eye drops and ointments, a temporary eye patch or 'bandage' contact lenses or excimer laser therapy.

A corneal transplantation may be required in the most severe cases.

## KERATITIS

Keratitis is an inflammation of the cornea caused by infection, injury or from leaving contact lenses in too long.

Keratitis can be painful and temporarily affect your vision or, in rare cases, damage your sight.

Infectious keratitis requires urgent attention. Depending on the cause, your ophthalmologist will typically prescribe antibacterial, antifungal or antiviral eye drops or ointments to treat the infection.

Prescription eye medication, oral medication or, in some cases, intravenous therapy may be used for more severe cases.

## OCULAR HERPES

Ocular herpes is a type of keratitis (see above) caused by the herpes simplex virus (HSV).

While it's not possible to cure ocular herpes, there are a number of treatments that may help manage the condition and control further outbreaks. These include ointments, debridement, steroid eye drops and surgery.

# COMPREHENSIVE EYE CARE



Scan the QR code to learn more about this service on our website

Vision Eye Institute is the largest private provider of ophthalmic services in Australia. Our team of highly regarded doctors includes general ophthalmologists as well as those who specialise in specific areas/conditions of the eye.

LASER EYE SURGERY



CATARACT & LENS SURGERY



GLAUCOMA



DIABETIC EYE DISEASE



MACULAR DEGENERATION



RETINAL CONDITIONS



KERATOCONUS



DRY EYE



PTERYGIUM



CORNEAL TRANSPLANTATION



CORNEAL CONDITIONS



NERVE-RELATED VISION PROBLEMS



RECONSTRUCTIVE EYE SURGERY



CHILDREN'S EYE HEALTH



GENERAL EYE HEALTH



## OUR CORNEAL CLINICS

For more information or to find a Vision Eye Institute clinic that treats corneal conditions, visit:

[visioneyeinstitute.com.au/services/corneal-conditions](https://visioneyeinstitute.com.au/services/corneal-conditions)

This information is general in nature. All medical and surgical procedures have potential benefits and risks. Consult your ophthalmologist for specific medical advice.



[visioneyeinstitute.com.au](https://visioneyeinstitute.com.au)



Transforming lives. That's our vision.