



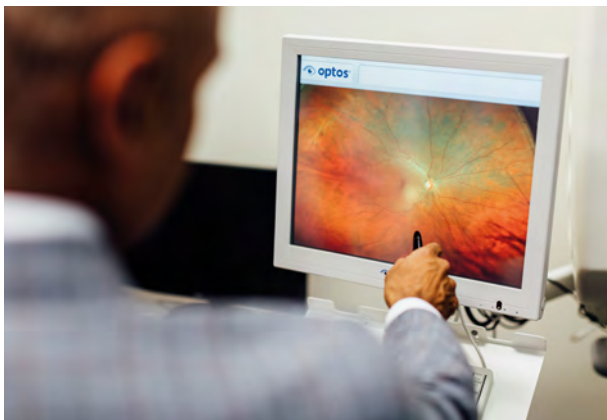
GENERAL INFORMATION

BOX HILL CLINIC

SPECIALIST EYE CARE FOR PATIENTS

Vision Eye Institute Box Hill specialises in the diagnosis and treatment of retinal disorders, including urgent and emergency cases. We focus on delivering high-quality patient care, based on individual attention, prompt diagnosis and a straightforward explanation of your condition.

Our endeavour is to provide patients with access to world-class specialist care, including the latest technology and treatments available. We are co-located with Vision Day Surgery Eastern, meaning surgical procedures can be performed on-site for your convenience.



RETINAL AND CATARACT CLINIC

Our clinic specialises in diagnosing and treating conditions that affect the retina, including those described below. We also offer services for patients with cataracts. Our day surgery is equipped with a state-of-the-art femtosecond laser for cataract surgery.

After your initial consultation, an orthoptist will be available to answer your questions and to help you make an informed decision about your treatment. If tests and treatments are required, we will make every effort to schedule these procedures on the same day as your consultation, so you may be in the clinic for up to 3–4 hours.

RETINAL CONDITIONS



We treat all conditions that affect the retina (the light-sensitive tissue at the back of the eye) and macula (the part of the retina responsible for central vision). These include age-related macular degeneration, epiretinal membrane, macular hole, floaters, retinal detachment, posterior vitreous detachment, retinal vein occlusion and diabetic retinopathy.

Many of these conditions can be sight-threatening and require urgent treatment. Your retinal specialist may recommend eye (intravitreal) injections, retinal laser treatment or sutureless retinal surgery, depending on your condition.

DIABETIC EYE DISEASE



Patients with type 1 diabetes and nearly two-thirds of people with type 2 diabetes will usually develop eye complications within 20 years, such as cataracts, glaucoma or diabetic retinopathy. Our doctors have expertise in diagnosing and treating eye conditions in patients with diabetes.

CATARACT & LENS SURGERY



Cataract treatment involves keyhole surgery to remove the cloudy lens, which is replaced with an artificial intraocular lens. Cataract surgery is the most common eye surgery performed in the world and has a high success rate. Our surgeons perform laser cataract surgery and, in some cases, can help patients get rid of their reading glasses by using the latest lens options.



All medical and surgical procedures have potential complications. Check with your ophthalmologist before proceeding.

HIGHLY EXPERIENCED SPECIALIST

Doctor partners



Dr Devinder Chauhan

Vitreoretinal Surgery, Medical Retina,
Cataract Surgery

Dr Devinder Chauhan is a retinal ophthalmologist, specialising in the medical and surgical treatment of retinal, macular and vitreous conditions. He also routinely combines retinal and cataract surgical procedures.



Dr Eric Mayer

Vitreoretinal Surgery, Medical Retina,
Cataract Surgery, General Ophthalmology

Dr Eric Mayer specialises in the diagnosis and treatment of retinal conditions, with expertise in vitreoretinal surgery, laser treatment and eye (intravitreal) injections. He also has considerable experience in traditional (manual) and laser cataract surgery.

Clinic Manager

Margaret Kelly



CONVENIENTLY LOCATED

Our clinic is situated in front of Whitehorse Plaza, with ample parking available in the surrounding shopping centre car parks. Alternatively, the 109 tram stops directly opposite our clinic, and Box Hill train station is a 3-minute walk away. A ramp and lift access are available for people with limited mobility.



VISION EYE INSTITUTE BOX HILL

Level 1, 852 Whitehorse Rd, Box Hill, VIC 3128

T: (03) 9890 4333 or **1800 MACULA**

F: (03) 9890 4666

E: VRIE.bookings@visioneyeinstitute.com.au



visioneyeinstitute.com.au

VEI Services Pty Ltd ABN 94 097 821 906



Transforming lives. That's our vision.

VEI27800 | VIC-VEI-EDS-306 | 02-20